

Currituck County

Reporting Quarter: 4th Quarter 2007

County Profile Contact (919) 715-6374
Economic Development Contact (919) 733-4977

Demographics

Certified Population, July 2006	23,580	77
Population, 2000 Census	18,190	84
Population, 1990 Census	13,736	88
Percent population change, 1990-2000	32.4	11
Percent population change, NC, 1990-2000	21.3	

County Rank



Workforce & Education

Employment, Nov 2007	12,123	72
Unemployed, Nov 2007	386	88
Percent unemployed, Nov 2007	3.1	99
Percent unemployed, 2006	3.5	99
Percent unemployed, NC, Nov 2007	5.1	
Percent unemployed, NC, 2006	4.8	
Percent high school graduates or higher, 2000	77.6	29
Percent high school graduates or higher, NC, 2000	78.1	
Average SAT score (2400 scale), 2007	1,466	35
Average SAT score (2400 scale), NC, 2007	1,486	
Percent bachelor's degree or higher, 2000	13.3	49
Percent bachelor's degree or higher, NC, 2000	22.5	

Taxes, Sales & Services

Property taxes/\$100 Value ('07-'08)	\$0.3200
Taxable sales (Mil \$, Sept 07)	\$29.1
Taxable sales (Mil \$, FY 06-07)	\$226.9
Pharmacist/10,000 Pop, 2006	2
Physician/10,000 Pop, 2006	3
RN/10,000 Pop, 2006	25
Dentist/10,000 Pop, 2006	2
Tier designation, 2008	2
Partnership Region	Northeast
Licensed Child Care Facilities, Sept 07	24
Child Care Slots, Sept 07	714

Income, Housing & Poverty

Average weekly wage per employee, 2nd Quarter 2007	\$535	66
Median household income, 2005	\$48,654	6
Per capita personal income, 2000	\$25,522	25
Per capita personal income, 2005	\$29,982	20
Per capita personal income, NC, 2006	\$32,234	
Median value of owner-occupied housing units, 2000	\$95,396	24
Median value of owner-occupied housing units, NC, 2000	\$108,300	
Percent in poverty, 2005	10.0	97
Percent in poverty, NC, 2005	14.9	

Notes: Data are the latest available at the date the profile was prepared. Demographics are from U.S. Census. Workforce & Education are from NC Employment Security Commission, U.S. Census, and NC Dept. of Public Instruction respectively; county unemployment rates are seasonally unadjusted. Average wage are from ESC's "Insured Employment and Wages in NC for Private Industry by Sector (2 digit)" which is based on the Current Population Survey. Income, Housing & Poverty are from U.S. Bureau of Economic Analysis and the U.S. Census, respectively. Jobs and Investments are from NC Dept. of Commerce. Closings & Layoffs by effective date are from the NC Employment Security Commission. Employment & Wages are from NCESC's "Insured Employment and Wages in NC for Industry by Sector (2 digit)" series; missing data or * indicates data not available or suppressed for confidentiality reasons. Taxes are from the NC Dept. of Revenue and prior to 7/05 represent gross sales but after are taxable sales. Medical data from the Cecil G. Sheps Center for Health Services Research, UNC-Chapel Hill. **County Ranking 1=highest.

Announced Jobs & Investments

Jobs announced, 2006	0
Jobs announced, Thru Oct 12, 2007	0
Total investment announced, 2006	\$0
Total investment announced, Thru Oct 12, 2007	\$0

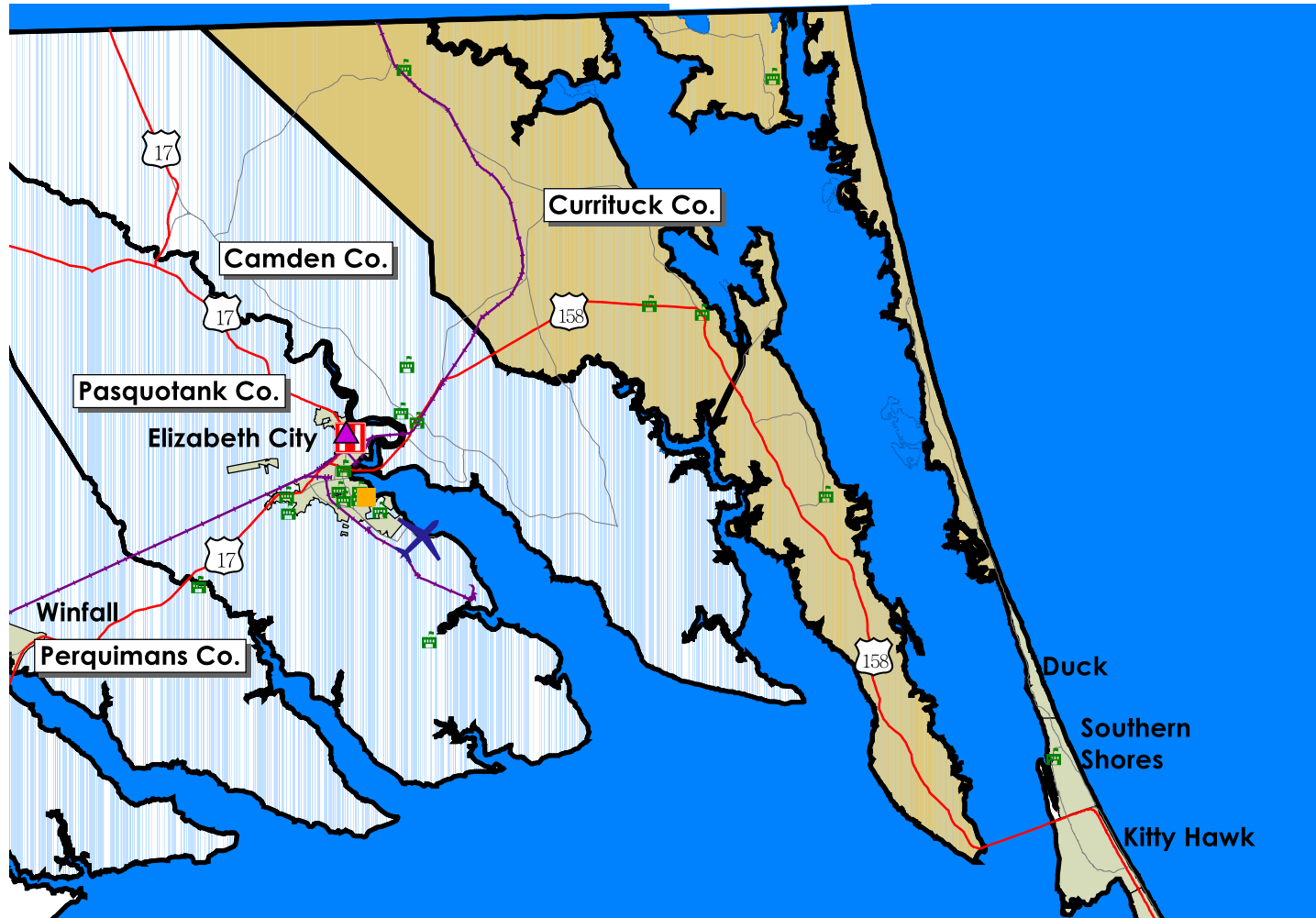
Announced Closings & Layoffs

Number of affected establishments, 2006	0
Number of affected establishments, Thru Dec 2007	1
Job losses, 2006	0
Job losses, Thru Dec 2007	1

Employment and Wages, by Sector (2nd Quarter 2007)

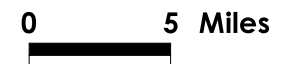
	Currituck			North Carolina		
	Avg Emp	% Total	Avg Wkly Wage	Avg Emp	% Total	Avg Wkly Wage
Total All Industries	5,963	100.0	\$535	4,070,849	100.0	\$718
Total Government	1,227	20.6	\$662	678,349	16.7	\$754
Total Private Industry	4,736	79.4	\$502	3,392,501	83.3	\$711
Agriculture Forestry Fishing & Hunting	67	1.1	\$423	30,294	0.7	\$517
Mining	0	0.0	\$0	4,055	0.1	\$1,176
Utilities	0	0.0	\$0	13,939	0.3	\$1,378
Construction	542	9.1	\$631	255,709	6.0	\$729
Manufacturing	81	1.4	\$534	537,281	13.2	\$876
Wholesale Trade	131	2.2	\$706	182,823	4.5	\$1,021
Retail Trade	1,221	20.5	\$408	462,301	11.4	\$468
Transportation and Warehousing	158	2.6	\$1,011	115,772	2.8	\$721
Information	18	0.3	\$762	72,926	1.8	\$1,025
Finance and Insurance	86	1.4	\$734	152,965	3.8	\$1,183
Real Estate and Rental and Leasing	628	10.5	\$399	54,786	1.3	\$673
Professional and Technical Services	96	1.6	\$795	182,439	4.5	\$1,082
Management of Companies and Enterprises	0	0.0	\$0	69,658	1.7	\$1,374
Administrative and Waste Services	226	3.8	\$1,219	243,995	6.0	\$505
Educational Services	0	0.0	\$0	57,097	1.4	\$711
Health Care and Social Assistance	210	3.5	\$693	434,459	10.7	\$688
Arts, Entertainment and Recreation	272	4.6	\$332	53,965	1.3	\$551
Accommodation and Food Services	659	11.1	\$275	346,693	8.5	\$260
Other Services Ex. Public Admin	261	4.4	\$357	103,559	2.5	\$475
Public Administration				228,584	5.6	\$765
Unclassified	40	0.7	\$383	17,783	0.4	\$651

Trends Profile Map Currituck County



Legend

-  Public Schools
-  Airports
-  Hospitals
-  Colleges and Universities
-  Community Colleges
-  Rail Lines
-  Interstate highways
-  US Highways
-  State and County Highways
-  Major Rivers and Streams
-  Major Waterbodies
-  Municipal Boundaries



Currituck County

Employment Characteristics

Reporting Quarter: 4th Quarter 2007

County Profile Contact (919) 715-6374

Commerce Economic Development Contact (919) 733-4977

Employment Security Commission (919) 733-2936

Top Manufacturers (2nd Quarter 2007)

KITTY HAWK IRON & STEEL WORKS INC
COASTAL READY MIX CONCRETE CO INC

Employment Range

Below 50
Below 50



Top Non-Manufacturing Employers (2nd Quarter 2007)

CURRITUCK COUNTY BD OF EDUCATION
CURRITUCK COUNTY FINANCE OFFICE
BRINDLEY & BRINDLEY REALTY & DEVEL
FOOD LION LLC
TWIDDY & CO OF DUCK INC
WHITECAP LINEN
COROLLA CLASSIC VACATIONS LLC
SOUTHLAND TRADE CORP
SENTARA HEALTH CENTER
PRESIDENTIAL AIRWAYS INC

Employment Range

500-999
250-499
100-249
100-249
100-249
100-249
100-249
100-249
100-249
50-99

Industry

Education and Health Services
Public Administration
Financial Activities
Trade, Transportation, and Utilities
Financial Activities
Other Services
Financial Activities
Trade, Transportation, and Utilities
Education and Health Services
Trade, Transportation, and Utilities